



BreathLogix®

Unmanned Breath Alcohol Testing

Automatically Screen Individuals for Alcohol

BreathLogix® is a compact wall-mounted breath alcohol tester that quickly screens the individual's breath for alcohol. BreathLogix is designed for un-manned rapid testing of large and small people groups, delivering pass/fail and 3-digit BrAC results.

The intuitive touch screen display and audio prompts guide the individual through a self-test, saving an organization valuable time and money in resource allocation.

A camera captures the individuals image at the start of the test and as they provide a breath sample, providing a complete chain of custody.

Program Uses

- Ideal for non-regulated workplace testing, the BreathLogix breath alcohol tester is able to screen employees, contractors, or visitors as part of security and access control protocols, or to screen employees before they start work.
- Use BreathLogix in probations, 24/7 sobriety programs or in shelters to initiate unmanned testing.

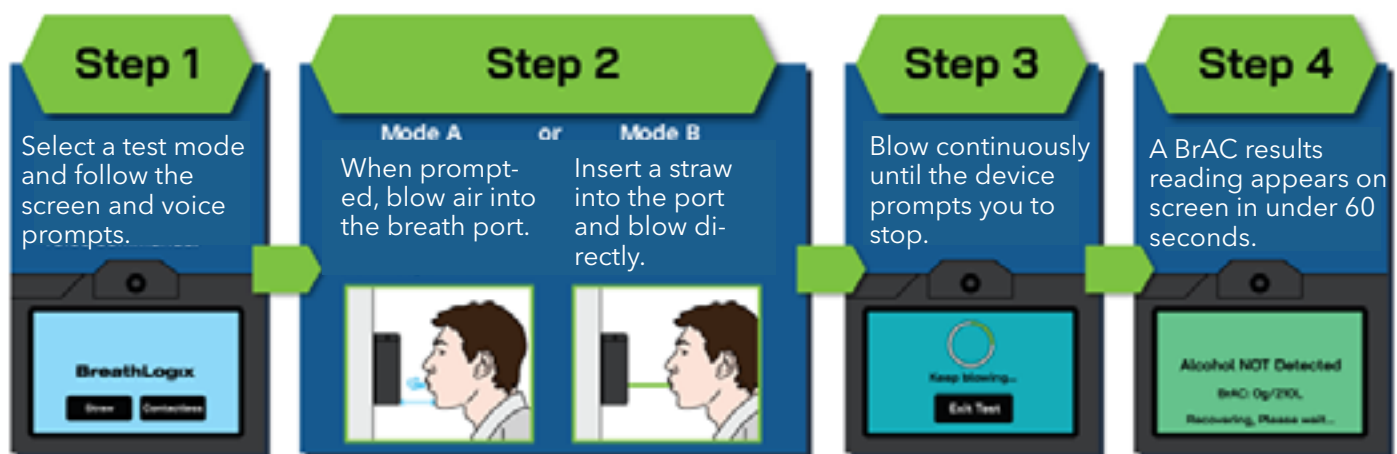


SPECIFICATIONS

| | | | |
|-------------------------|-----------------------------|------------------------|---|
| Sensor Type: | Fuel Cell | Calibration: | Pre-calibrated cartridge replaced annually |
| Measurement: | .000 - .300 BrAC | Memory: | Internal Memory which can be saved to USB drive or uploaded to a cloud-based data management system |
| Breath Sampling: | Automatic | Display: | 5" capacitive touch screen |
| Response Time: | Results under 20 sec. | Material | Durable ABS plastic |
| Power: | 12 Volt DC power adapter | Operating Temp: | 32° - 113°F (0° - 45° C) |
| Test Modes: | Direct (straw); Contactless | Size: | 6.3 x 7 x 2.7" - 2.2 lbs |

FEATURES

- Audio and visual prompts administer self-tests
- Camera captures test subject's images providing a complete chain of custody
- Delivers Pass/Fail results and a three-digit BrAC level
- Email and text notifications of test results
- Wi-Fi and Bluetooth enabled
- Internal data storage or upload to cloud-based data management
- USB port to download test records
- Optional integration hub allows for integration with other security devices
- Optional Hikvision facial recognition
- Optional thermal printer
- Mount it to a wall or on the optional stand



Standard Equipment:

- 5" touchscreen display
- Built-in camera and speakers
- WiFi, Bluetooth enabled
- USB port
- Internal memory
- Pre-calibrated fuel cell cartridge
- Cloud database and SMS text/email notifications are added features

Visit alcopro.com/breathlogix for packages and pricing.

ALCOPRO
DRUG & ALCOHOL TESTING PRODUCTS